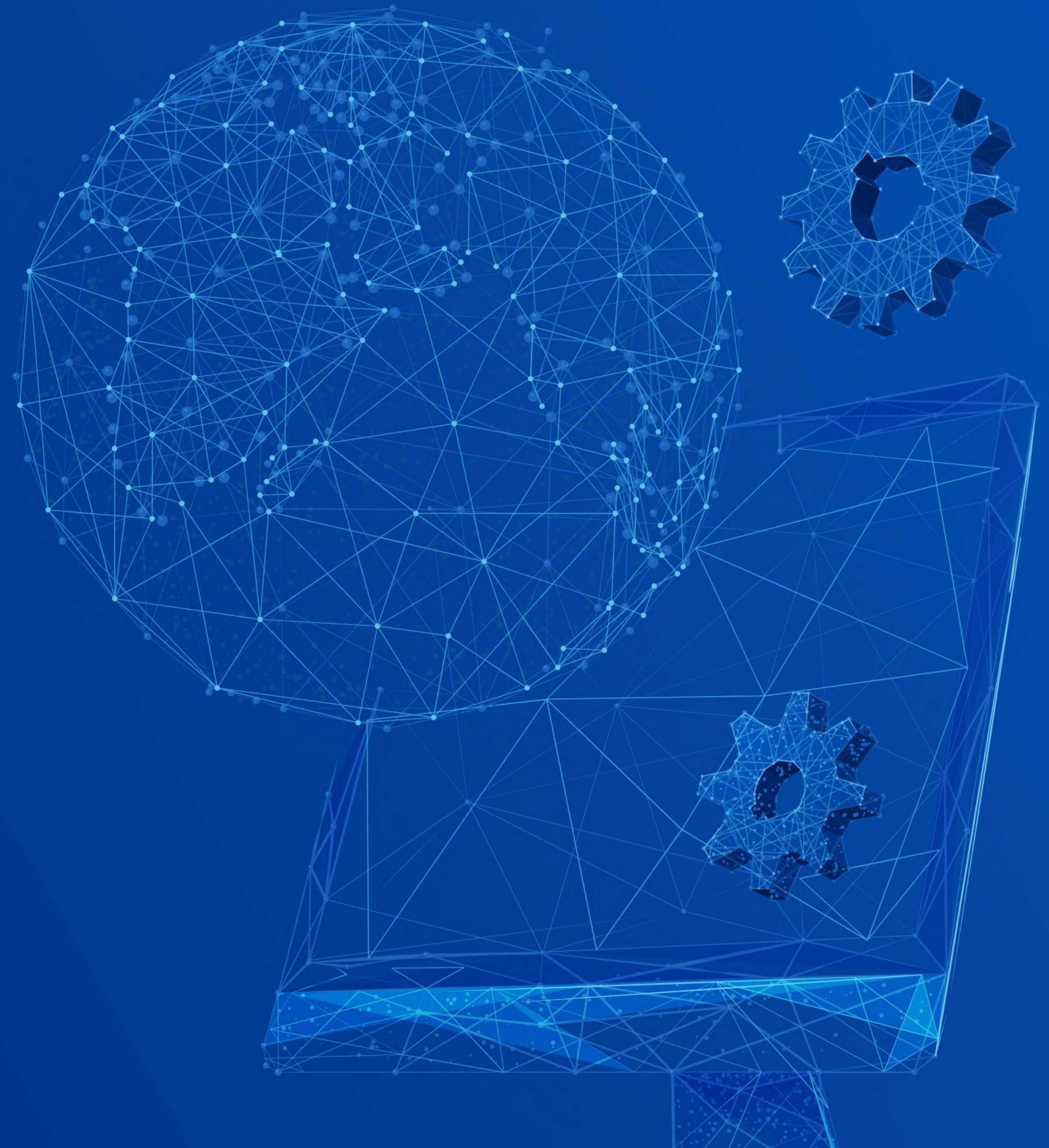




CUSTOM TRAVEL SOFTWARE DEVELOPMENT

www.software.travel



OVERVIEW

We design and build Custom Travel Software and redesign existing systems

For some travel companies off-the-shelf software is just not enough to meet their needs. That is why GP Solutions offers [Custom Software Development Services](#) to bridge this gap.

Our long-standing expertise enables us to serve as a reliable software development partner. We provide profound travel industry knowledge and software development skills to deliver the solutions you need.



Key Highlights

GP Solutions designs and builds tailor made travel software since 2002.

7+

years — longest custom development engagement

50+

technologies in our stack

15+

years of expertise in travel software development

350+

IT professionals passionate about travel

30+

dedicated development teams allocated to date

450+

projects successfully implemented

30+

developers — largest team allocated to a customer

Our Technology Stack

Front-end Development



Back-end Development



Functional Programming Languages



Mobile Development



Database Management



DevOps



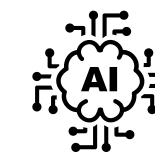
Cloud Solutions



Big Data



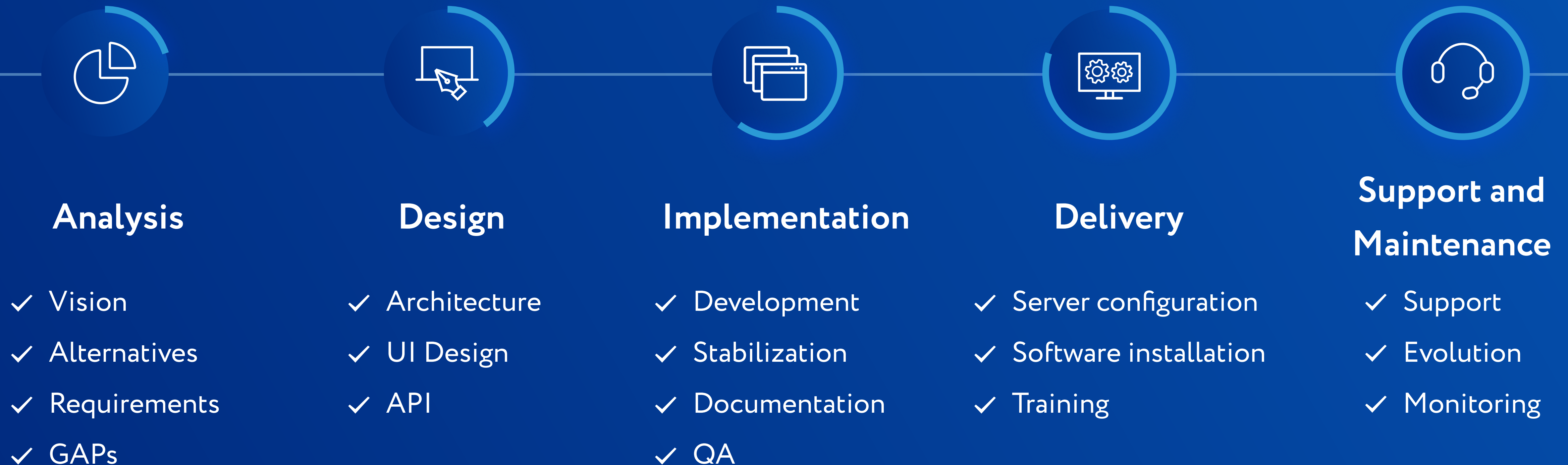
Other



etc.

Our Workflow

GP Solutions guides its customers through all phases of a project lifecycle. A typical project goes through the following set of phases:



Being a full-cycle development company we are ready to take up your project at any production stage - and bring it to perfection!

Engagement Models

Depending on the project, GP Solutions offers one of the generally recognized [Engagement Models](#) that is a better fit for a particular project.

MOST POPULAR

TIME & MATERIAL MODEL

For mid- and long-term projects

3+
months

- ✓ Pricing based on hourly rates
- ✓ Payment upon actual man-hours
- ✓ Support of requirements changes
- ✓ Full control over project team

FIXED PRICE MODEL

For short-term projects

1-3
months

- ✓ Fixed requirements and scope
- ✓ Fixed budget for implementation
- ✓ Fixed terms of cooperation
- ✓ Fixed deadlines for delivery

DEVELOPMENT OPTIONS

Engagement Options

Before starting a new custom project, the right approach needs to be chosen to make sure it is implemented effectively. GP Solutions offers several development options covering a wide spectrum of business cases and requirements.



Dedicated Development Teams

The way to go for companies seeking to onboard engineering



Product-based Implementation

Ideal for clients whose needs are covered well by our turnkey solutions



Bespoke Software Development

The right option for those willing to build a fully custom solution from scratch

Dedicated Team Advantages

Extensive Travel Domain Expertise



- ✓ Easy to understand requirements
- ✓ Knowledge to make technical decisions
- ✓ History of success in travel projects

Cost-Effective & Flexible Resourcing



- ✓ Find specific talents at lower cost
- ✓ Easy to add or replace specialists
- ✓ No extras or payments for idle time

Free Setup & Operations Management



- ✓ Staffing and workplace integration
- ✓ Infrastructure and process setup
- ✓ Administration and HR management

Equally Efficient as In-house



- ✓ Adoption of your internal processes
- ✓ 100% dedicated to your project
- ✓ Daily communication and transparency



Our Allocation Process

Once the Customer decides to on-board IT specialist from GP Solutions, we launch our allocation procedure typically going through a set of standard phases.

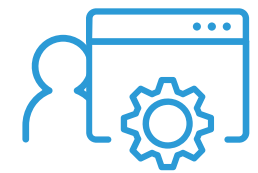


If the right specialist is not on our staff yet, we engage our HR department to find the one you need.

Our IT specialists can be allocated on your project as a team or individually with full- or part-time engagement.

Assemble Your Team

GP Solutions is able to cover practically any of commonly recognized as well as unique IT specializations within a software development team.



Front-End Developer



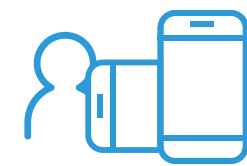
UI/UX Specialist



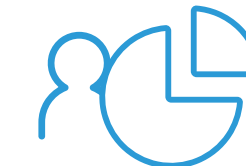
Back-End Developer



Project Manager



Mobile Developer



Business Analyst



Database Engineer



QA Engineer



System Architect



DevOps Engineer



Support Specialist



System Administrator



Product-based Implementation

We can use ready-made products by GP Solutions as a solid foundation for tailor-made solutions delivered to our customers.

GP Travel Enterprise

Our flagship platform offers 150+ functional modules that can be customized by our team to automate your travel company's operations.

GP Travel Hub

One of the most powerful and popular systems in our suite, GP Travel Hub offers 75+ ready-made connectors to world-famous suppliers.

Our in-house products are perfect for:



Tour Operators



OTAs



DMCs



TMCs



Bespoke Software Development

In case you need to enhance your existing system or develop a solution from scratch, bespoke software development services by GP Solutions is the right choice.

- **Development From the Ground Up**
We can create a completely new solution that is tailored specifically to match your unique business model.
- **Legacy Software Modernization**
We can give your existing system a new lease of life by modernizing it using the latest technologies.
- **Third-party Software Integration**
We can enrich your solution with an external tool of your choice to fit seamlessly into your processes.

ADVANTAGES

Why Custom Software Development



It's Your Property

You retain full control over the source code and IP rights



It's Unique

You're not limited in your functional and design choices



It's Under Your Control

You approve the technology stack and stay in charge of the implementation process



It Grows With You

You get a customizable solution which can be scaled over time



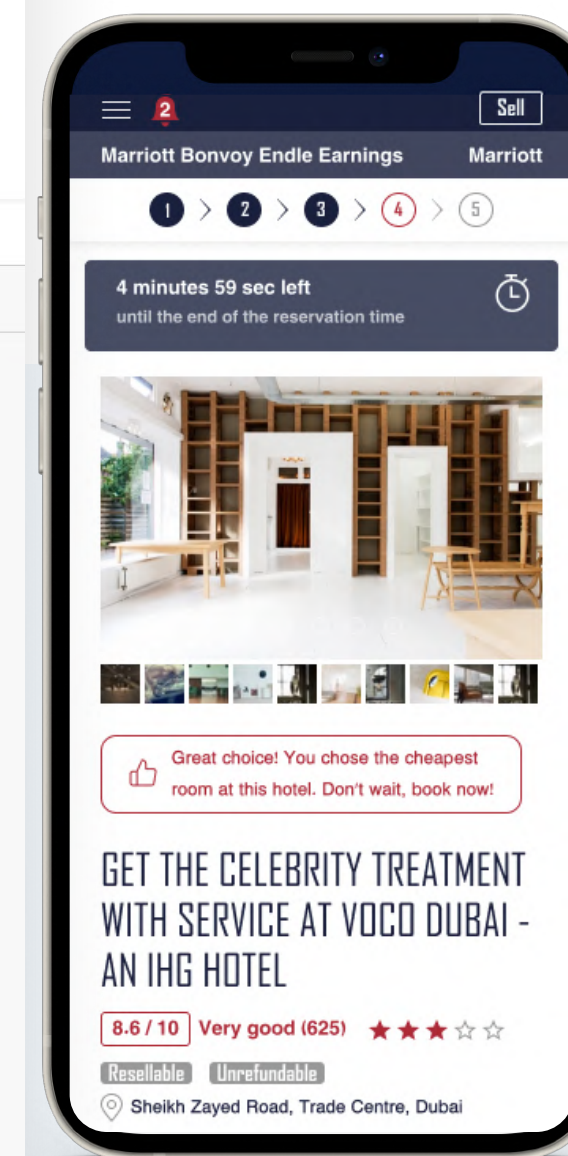
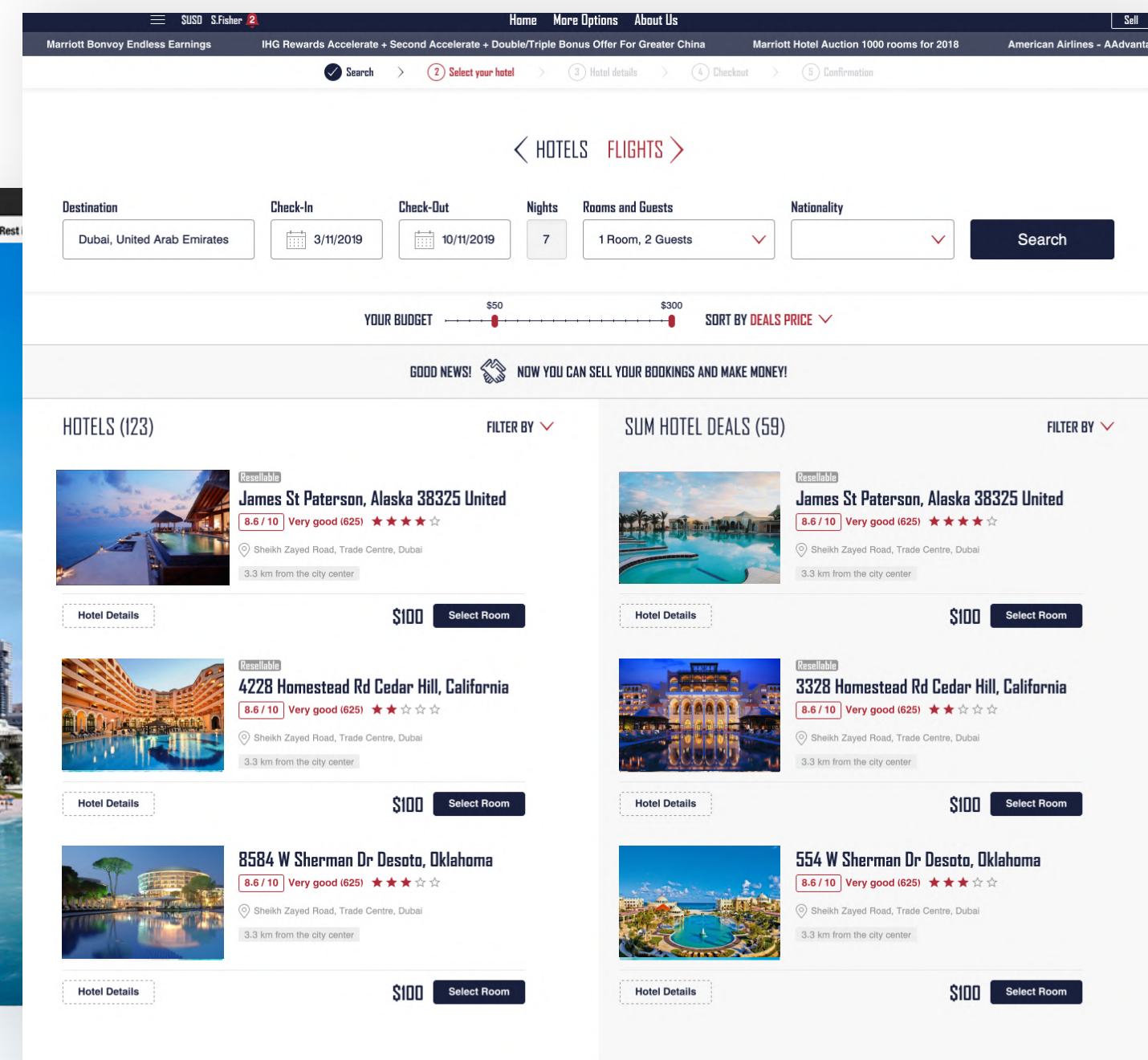
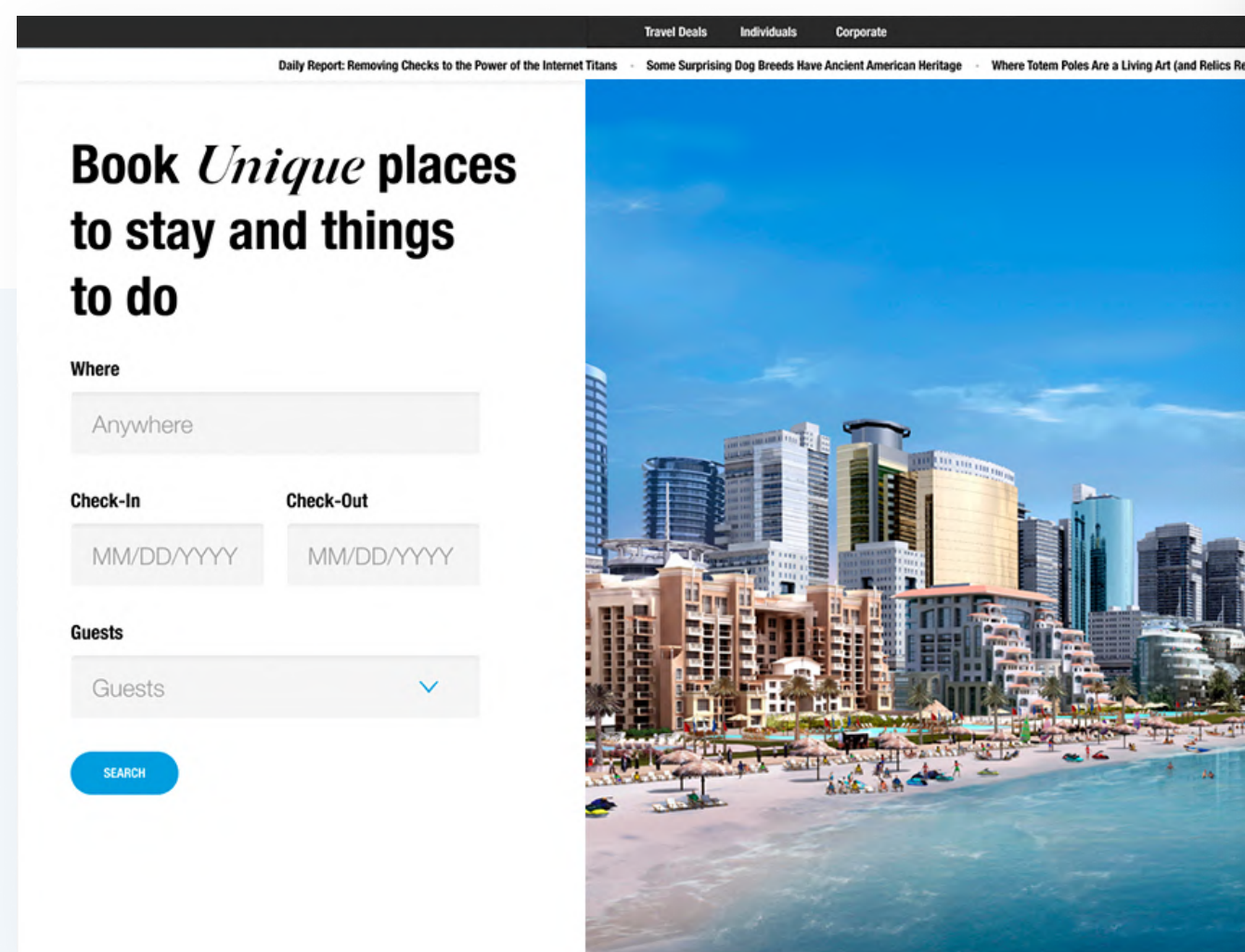
It's Your Timing

You adjust new releases and features to your schedule

OUR TRAVEL EXPERTISE

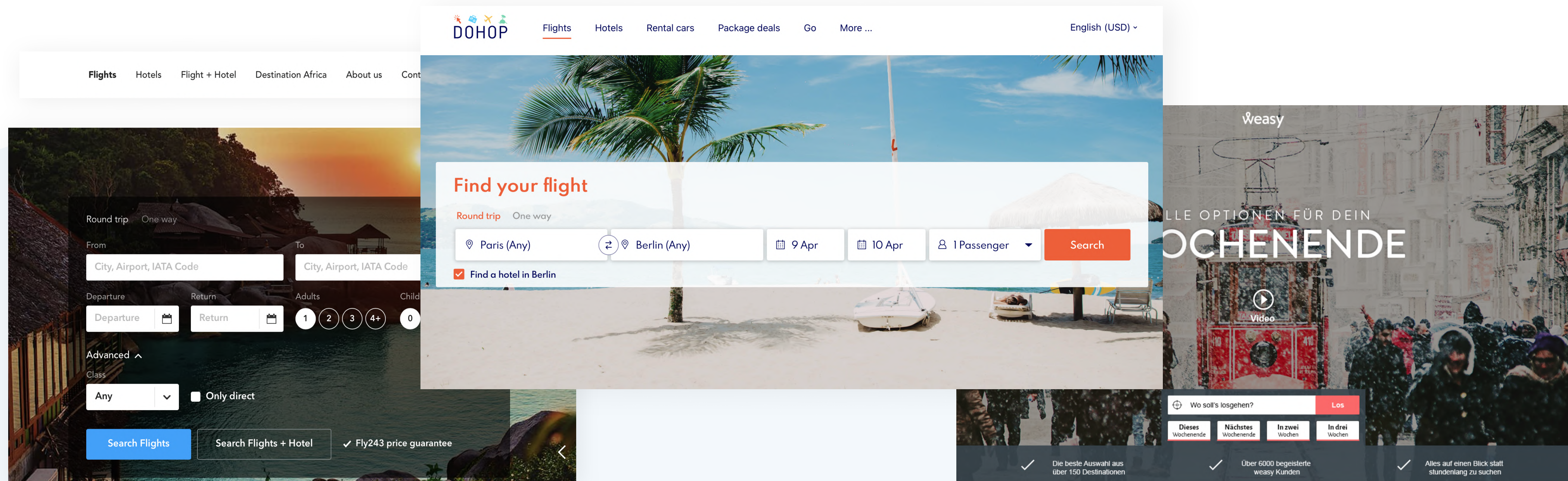
Development of Internet Booking Engines

- Complete **search & book** flow implementation
- **IBEs** for different travel service types (flights, hotels, transfers, etc.)
- **Dynamic packaging** logic implementation
- **Up-sell/cross-sell** functionality development



Travel Website Development

- Adaptive and responsive user interfaces adjusted for travel industry
- Front-end development using modern technologies
- Intuitive usability
- Cross-browser compatibility
- Integration and development using popular CMS (WordPress, Strapi, Joomla)



Integration of Travel APIs

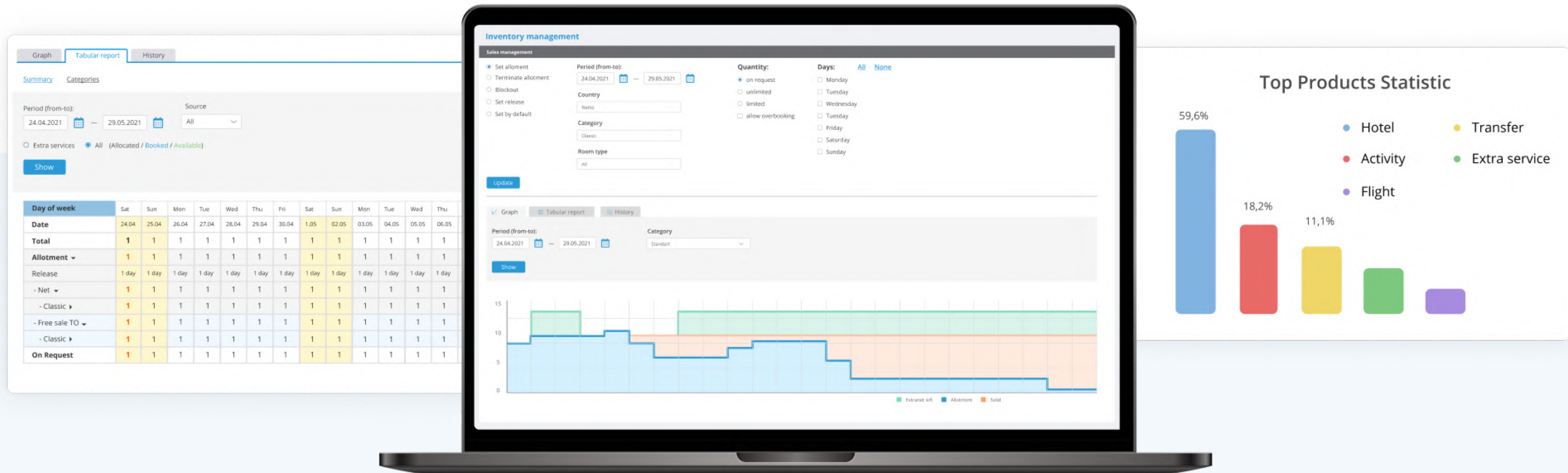
- 75+ of-the-shelf integrations available via GP Travel Hub
- Experience in integrations of bedbanks, GDSs, flight aggregators, OTAs, channel managers, CRSs, content suppliers, mapping service providers, etc.
- Assistance with certification and compliance procedures
- Push / Pull APIs, search&book APIs, etc.
- Familiar with IATA, NDC, OTA and other relevant standards



and many more...

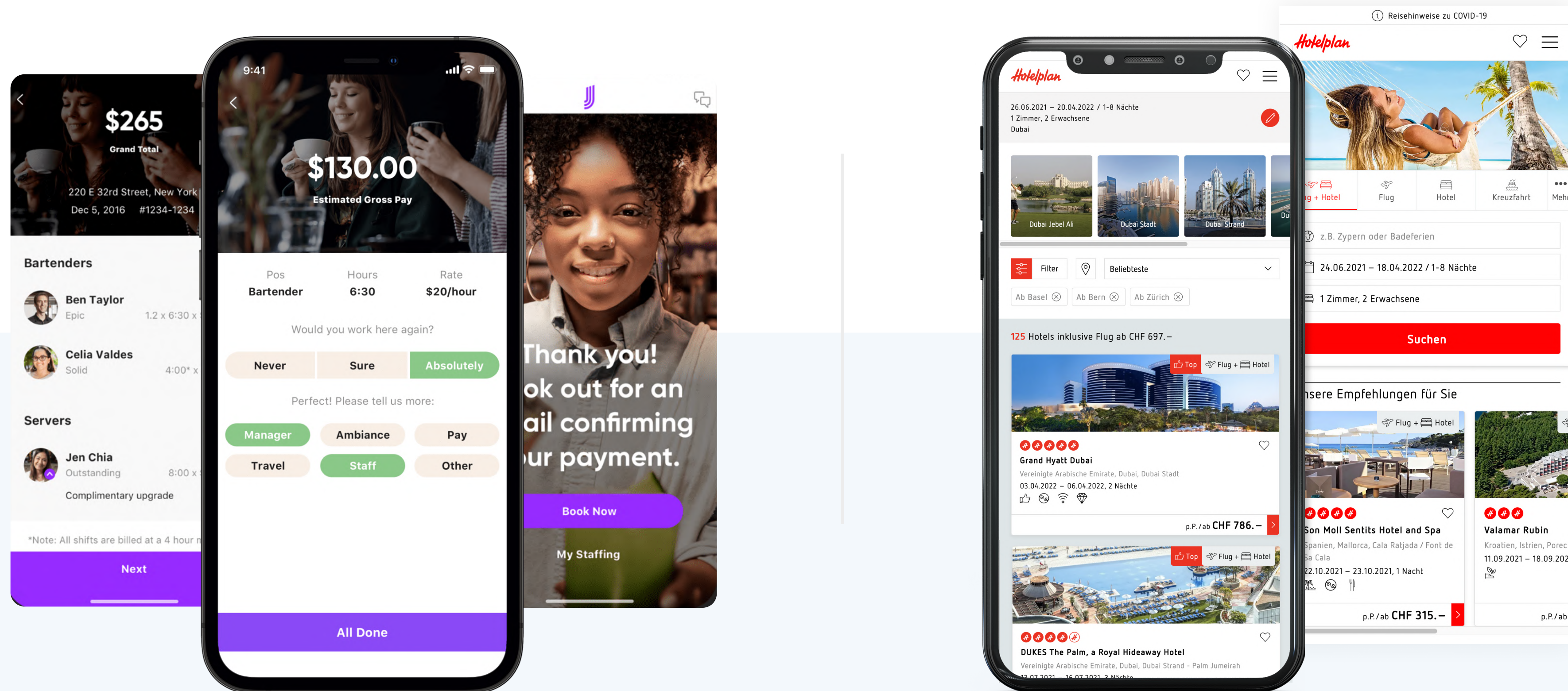
Business Process Automation

- Reservation management
- Analytics and reporting
- Corporate travel management solutions
- Inventory management
- Integration of payment systems
- Creation of travel distribution networks
- Business rule engines
- Accounting systems, CRMs and many more...



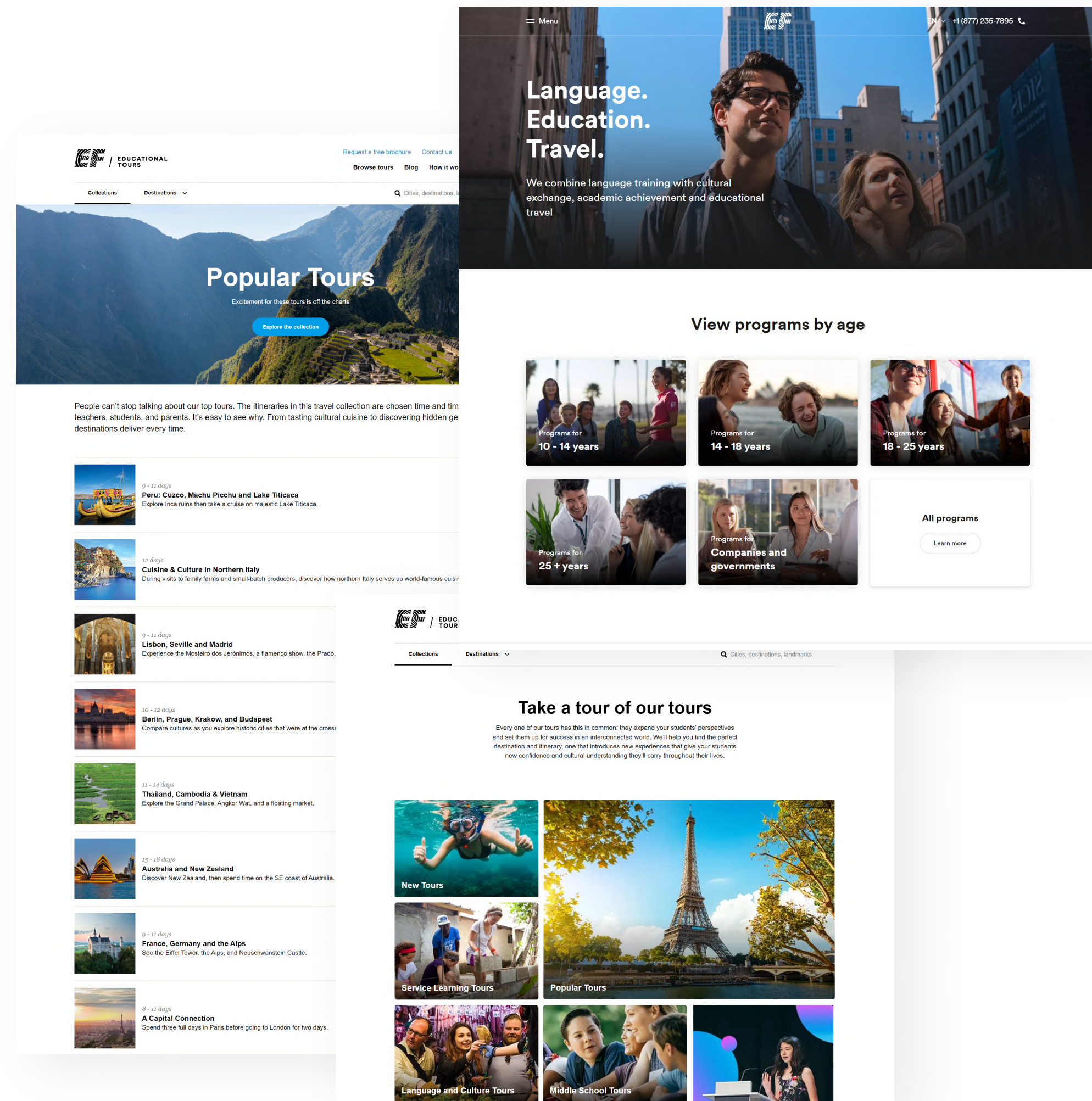
Mobile Development

- Cross-platform development for **IOS and Android**
- Development of cost-effective, user-centric **travel apps**
- Adaptive designs for **mobile browsers**



FEATURED CASES

Featured Cases



Client:

EF Education First

Country:

Switzerland

Vertical:

Educational Travel

Team size:

4 FTEs

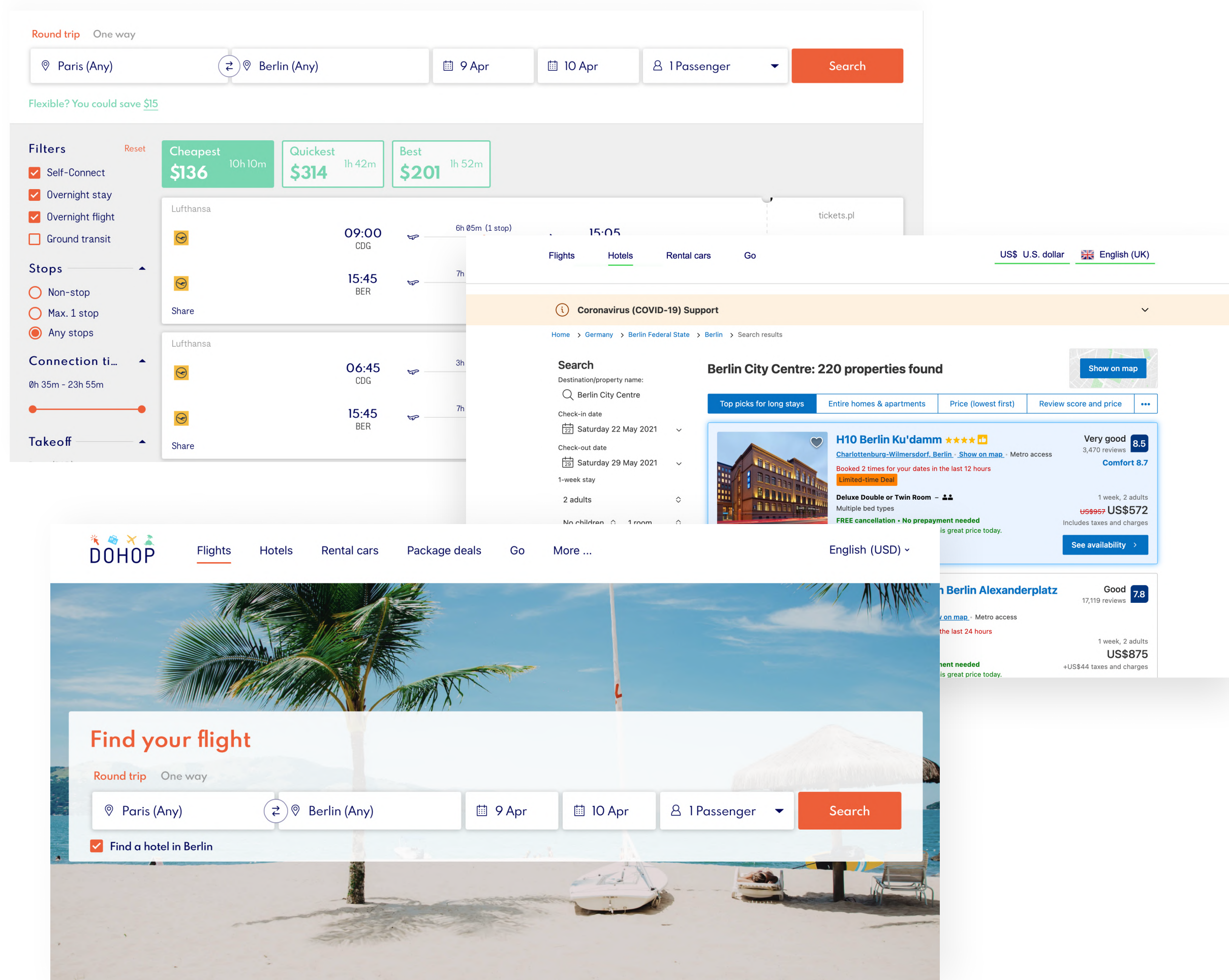
Technologies:

Javascript, Java, MySQL,
Nginx, Spring, Hibernate

Scope:

8000+ man-hours

Featured Cases



Client:

Dohop

Country:

Iceland

Vertical:

Travel Meta-Search

Team size:

7 FTEs

Technologies:

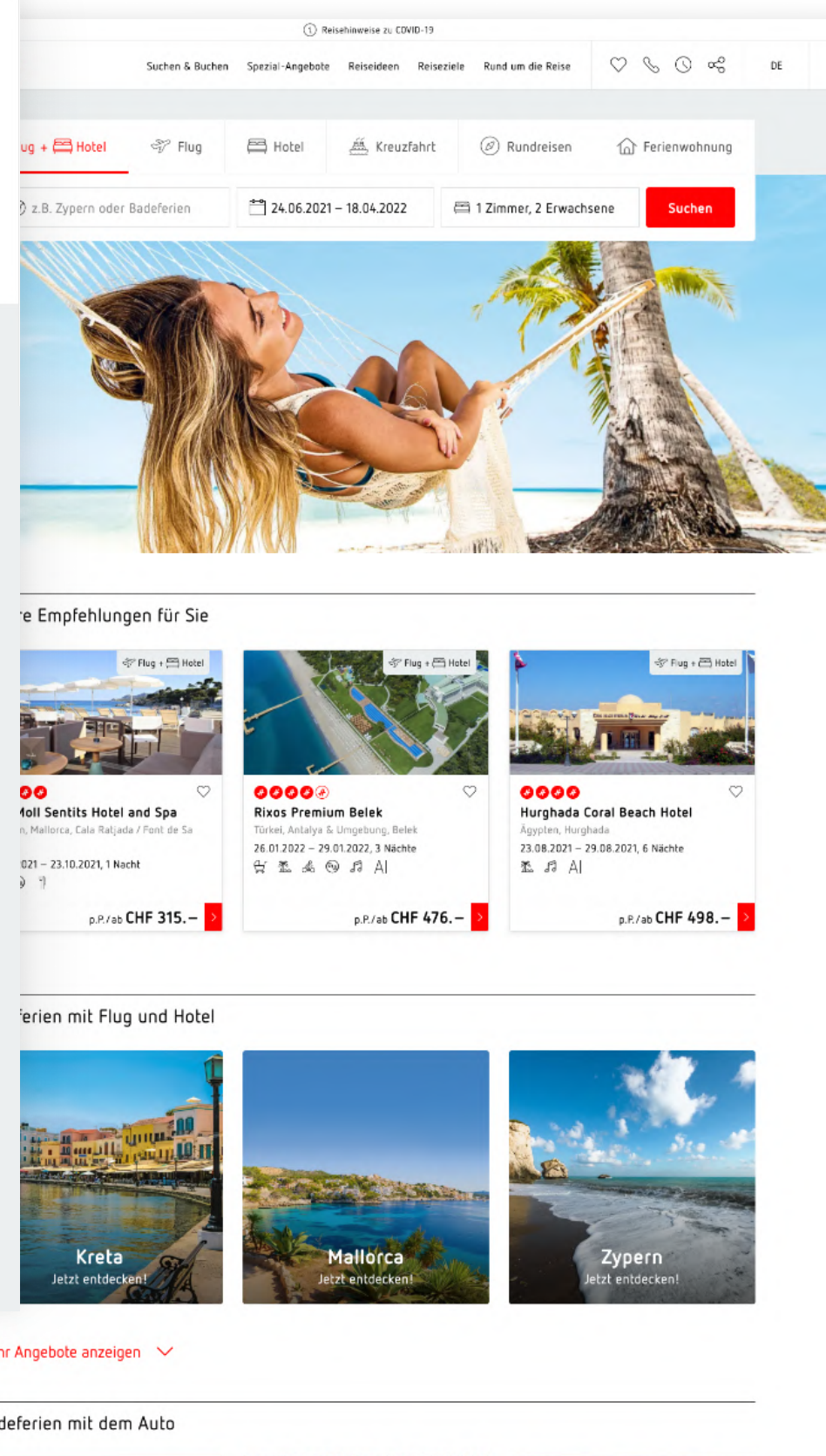
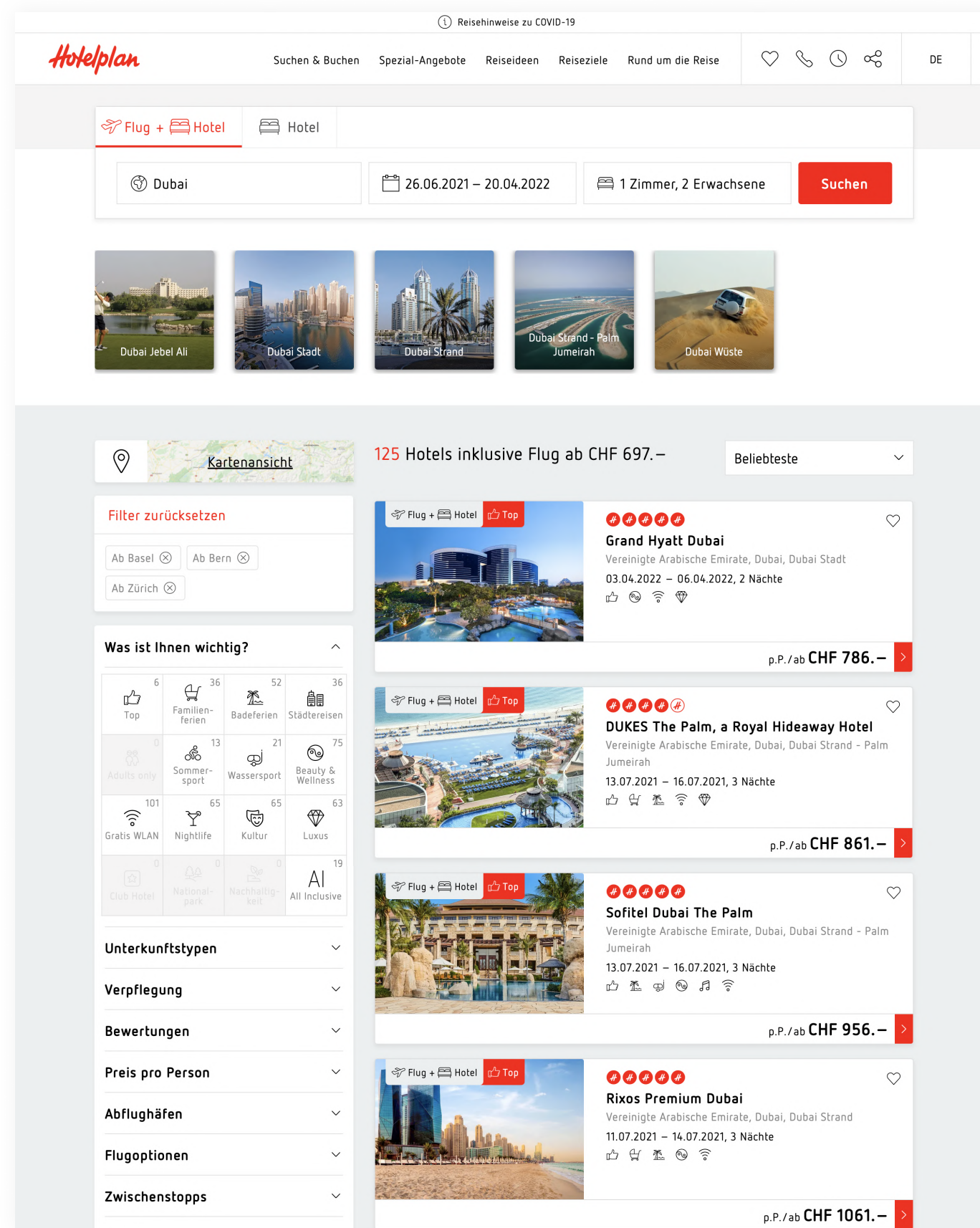
Python, Git, PostgreSQL,
XML/JSON/HTML

Scope:

29300+ man-hours

Featured Cases

Hotelplan



Client:

Hotelplan

Country:

Switzerland

Vertical:

Travel and Leisure

Team size:

12 FTEs

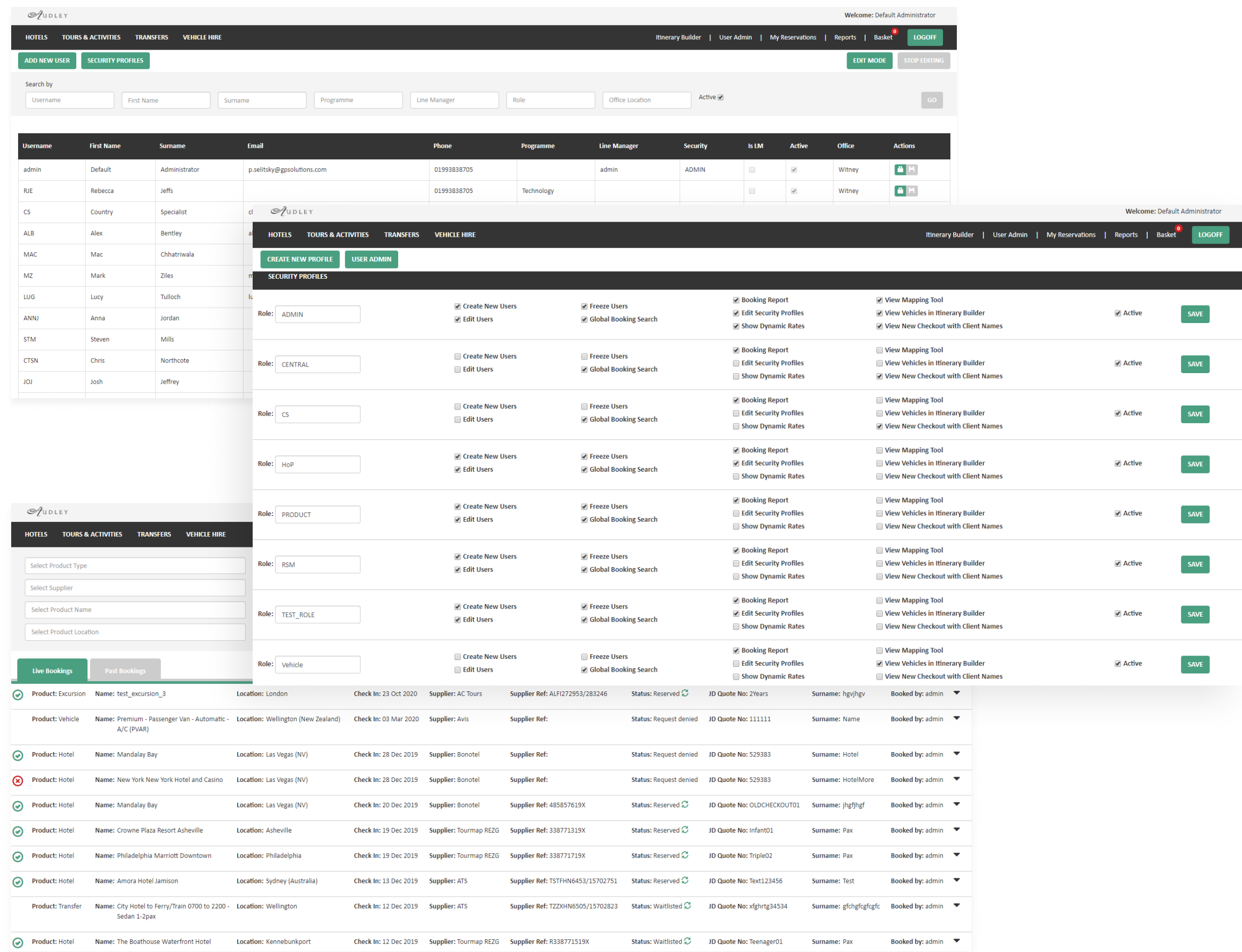
Technologies:

React, HTML/CSS, Java,
Python, Android/iOS

Scope:

11500+ man-hours

Featured Cases



Client:

Audley Travel

Country:

UK

Vertical:

Luxury Tour Operator

Team size:

6 FTEs

Technologies:

Java Script, Java, PHP

Scope:

9000+ man-hours

CLIENTS & TESTIMONIALS

Client Testimonials



“I can highly recommend the services of GP Solutions. During the past 1.5 years, our company has been working with GP Solutions on a new project of ours. The company offers high quality services. We can say that we have always been satisfied by their work.”

Dennis Behnsen

Vice President



“We found GP team to be professional, dependable and responsive. We are pleased to recommend GP Solutions GmbH as a reliable travel technology partner.”

Claus Jessen

Managing Director



“The team here at ACV is very happy with the quick release cycles and GP’s willingness to support us with any test and fix system issues. I see what the team does and it is highly appreciated.”

Sven Schiller

IT Director



Client Testimonials



"GP Solutions provide high-quality services and we have always felt that they care about our needs. Their strong expertise in travel IT makes it much easier to convey our requirements and find optimal technical solutions. We highly recommend the services of GP Solutions."

Marc Blaser

Director Projects
& E-Business



"Over the years of partnership GP Solutions has proven to be a reliable IT vendor with great vision and understanding of the travel industry in general and our business requirements in particular."

Abdulrahman Aziz

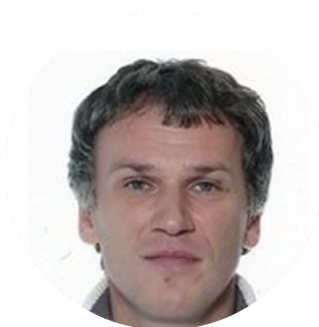
Project Manager



"We appreciate how promptly GP's specialist were able to respond to us and if needed to tailor the product's details to our preferences. Another important practical aspect is that GP's specialists always had a clear understanding of what are our business needs are."

Toomas Susi

Head of IT Department



Contact us

Head Office

Munich, Germany

Lise-Meitner-Strasse 1

+49 89 4161-523-0

Sales Office

Miami Beach, USA

407 Lincoln Road, Suite 12D

+1 305-209-6244

Sales Office

Dubai, UAE

Al Gargawi building, office 14

+1 305-209-6244

Development Center

Warsaw, Poland

Stefana Okrzei 1A / 10P

+48 22 266-21-33

Development Center

Krakow, Poland

Al Pokoju 1, 11th floor 31-548

+48 22 266-21-33

Development Center

Wroclaw, Poland

3 Sucha Street, 2nd floor 50-086

+48 22 266-21-33